



Empowering Transitions:

— Collaborative Strategies for Supporting
Students with Disabilities in Michigan

MITT: Who We Are

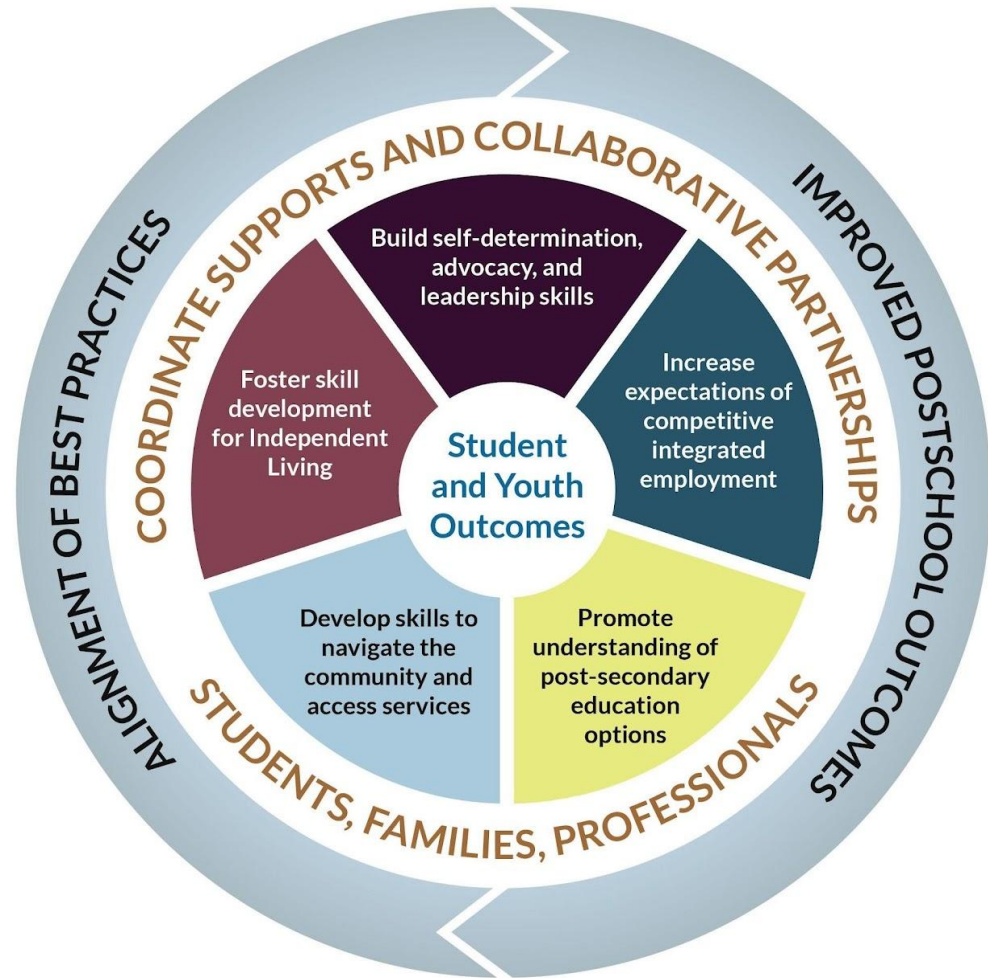


Bureau of Children's Coordinated Health Policy and Supports
(Michigan Department of Health and Human Services)

MITT: What We Do

Mission: Align transition services across State agencies to avoid duplication of services, promote a common understanding of secondary transition, and improve student outcomes.

Vision: Michigan will have a state level collaborative infrastructure to align supports and services that ensures a seamless transition for all students with disabilities in the K-12 system (up to age 26) into adult life.



MITT: What We Produce

2017: Employment First grant

2017-2019: Seamless Transition principles applied to five ISDs

2019: Statewide Vision Statement

2020: Transition Model

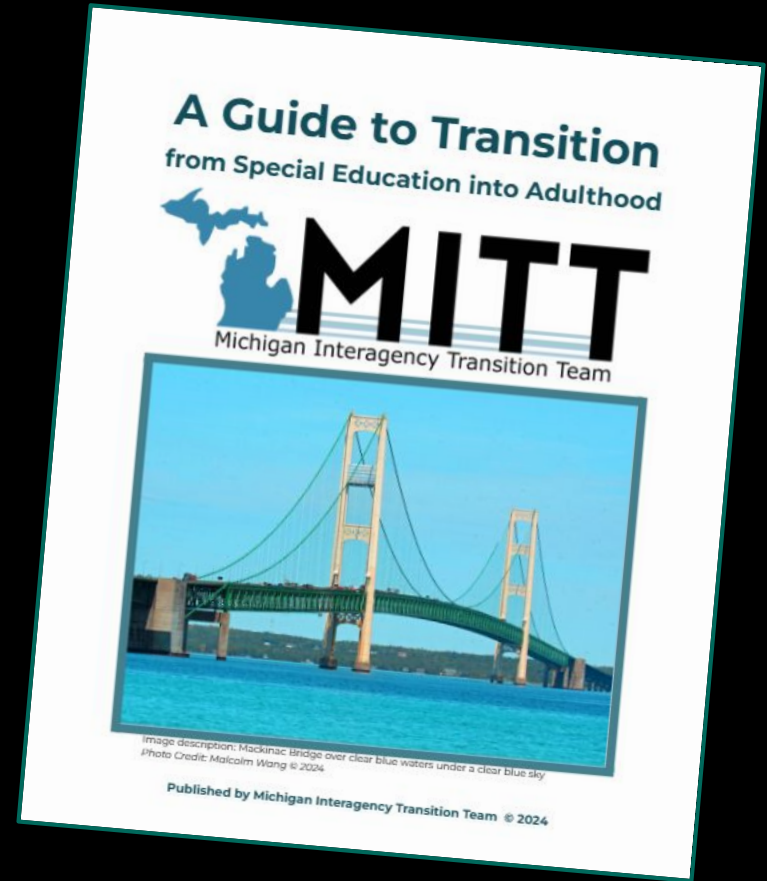
2022: Seamless Transition Model pilot project in Ottawa ISD

2023: Transition Resource Mapping project

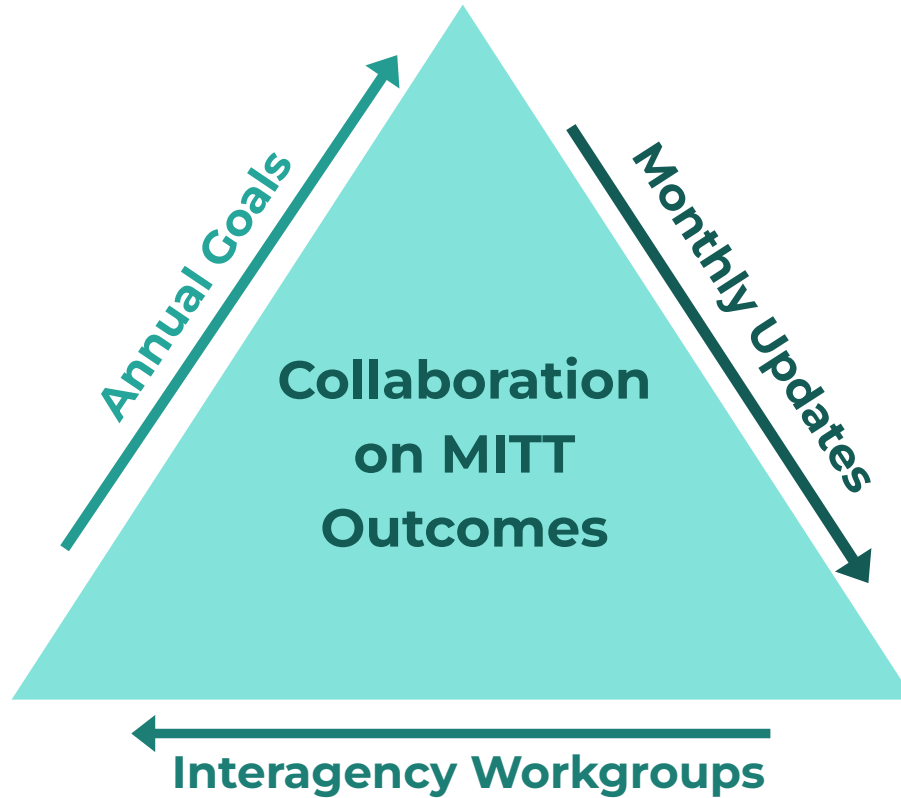
2024: A Guide to Transition

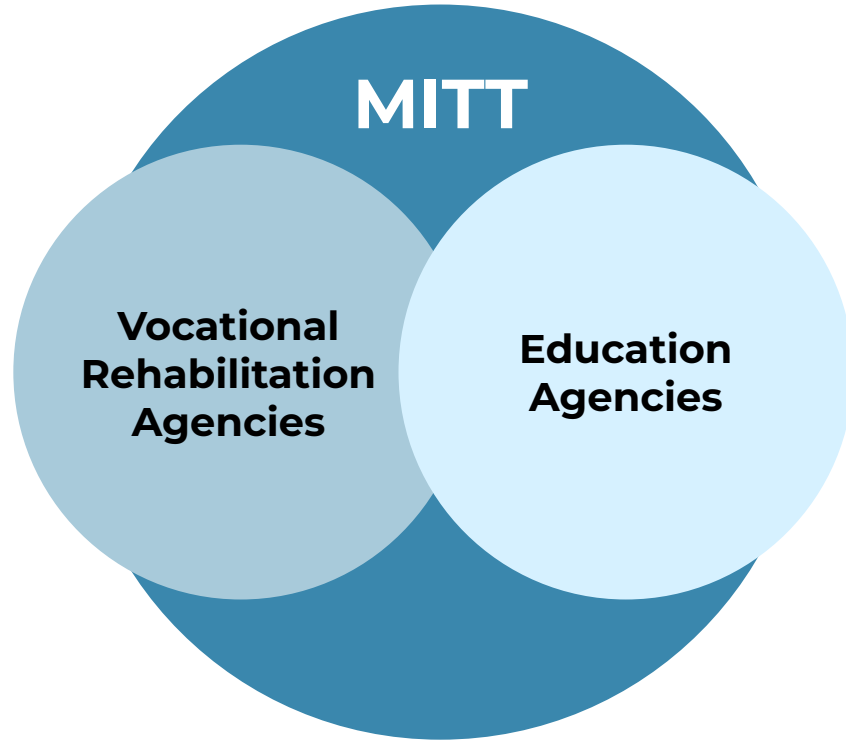
2024: Interagency Agreement

2025: Strategic Planning Implementation



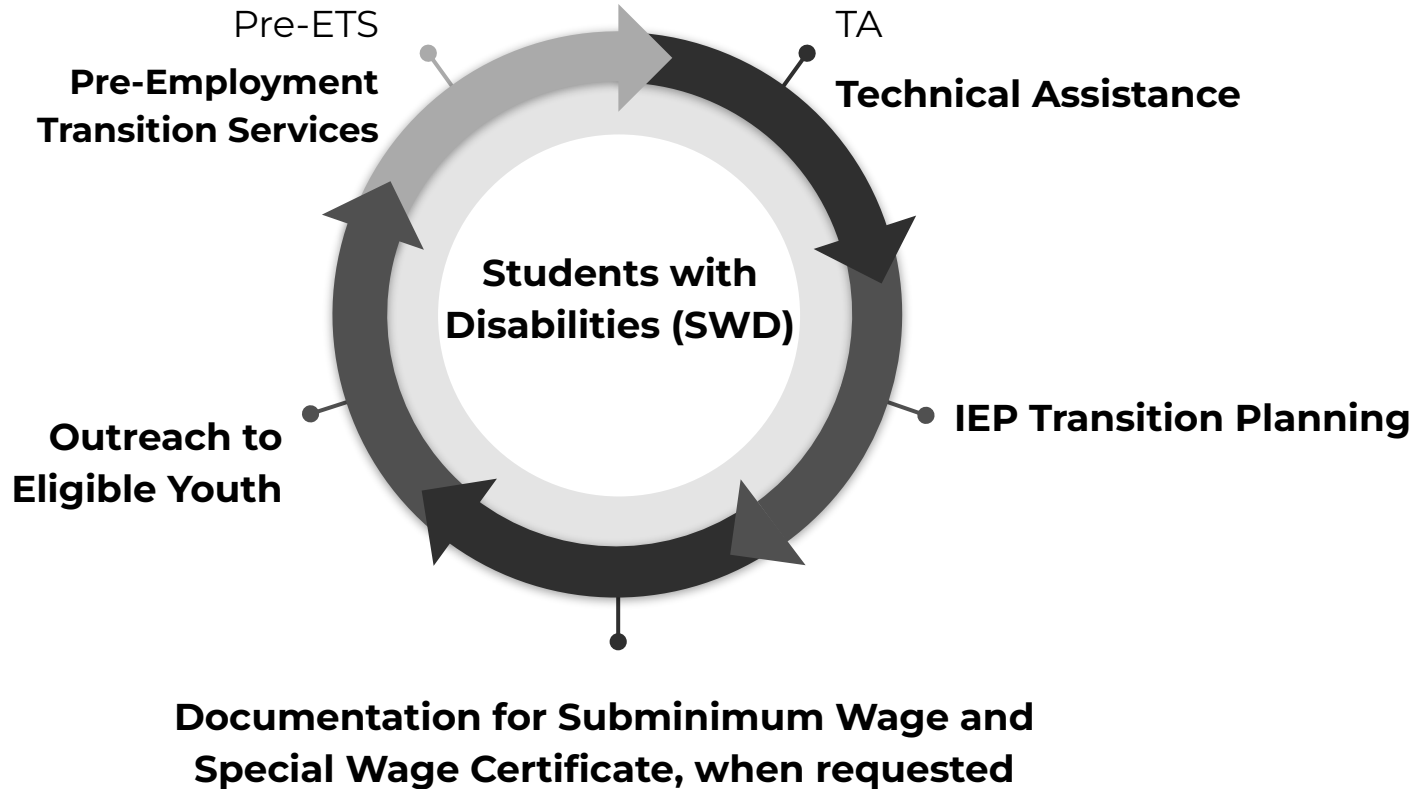
MITT: How We Implement





Interagency Agreement: Background

Interagency Agreement: Collaboration



What does VR Provide to Individuals?

- Pre-Employment Transition Services (Pre-ETS)
- VR Application, Eligibility Determination, and additional VR Services adhering to VR policies and procedures
- Supported Employment (SE meeting 511 Requirements)
- Competitive Integrated Employment (CIE)
- Community-based Services
- Helping with navigating Career Pathways
- Employment Related Accommodations
- Independent Living Services

For Students with Disabilities: Two Levels of Support in VR

First Level: Pre-Employment Transition Services (Pre-ETS)

Exploration of careers by:

- Offering of services to explore employment and training opportunities.
- Available to SWDs beginning at age 14 through completion of school.
- Services available include the five Required Pre-ETS Activities

Second Level: Individualized Vocational Rehabilitation (VR)

Planning for careers by:

- Offering of services to eligible students on preparing to enter the workforce, exploring careers options, and transition into employment.
- Services may include: Pre-ETS, Connecting with Training, finding and keeping a job.

Pre-Employment Transition Services (Pre-ETS)



The diagram consists of five teal pentagons arranged in two rows. The top row contains three pentagons, and the bottom row contains two. Each pentagon contains white text representing a service. The top row from left to right: Job Exploration, Workplace Readiness, and Counseling on Post-Secondary Education. The bottom row from left to right: Work-Based Learning and Instruction in Self Advocacy Training.

Job
Exploration

Workplace
Readiness

Counseling
on Post-
Secondary
Education

Work-Based
Learning

Instruction
in Self
Advocacy
Training

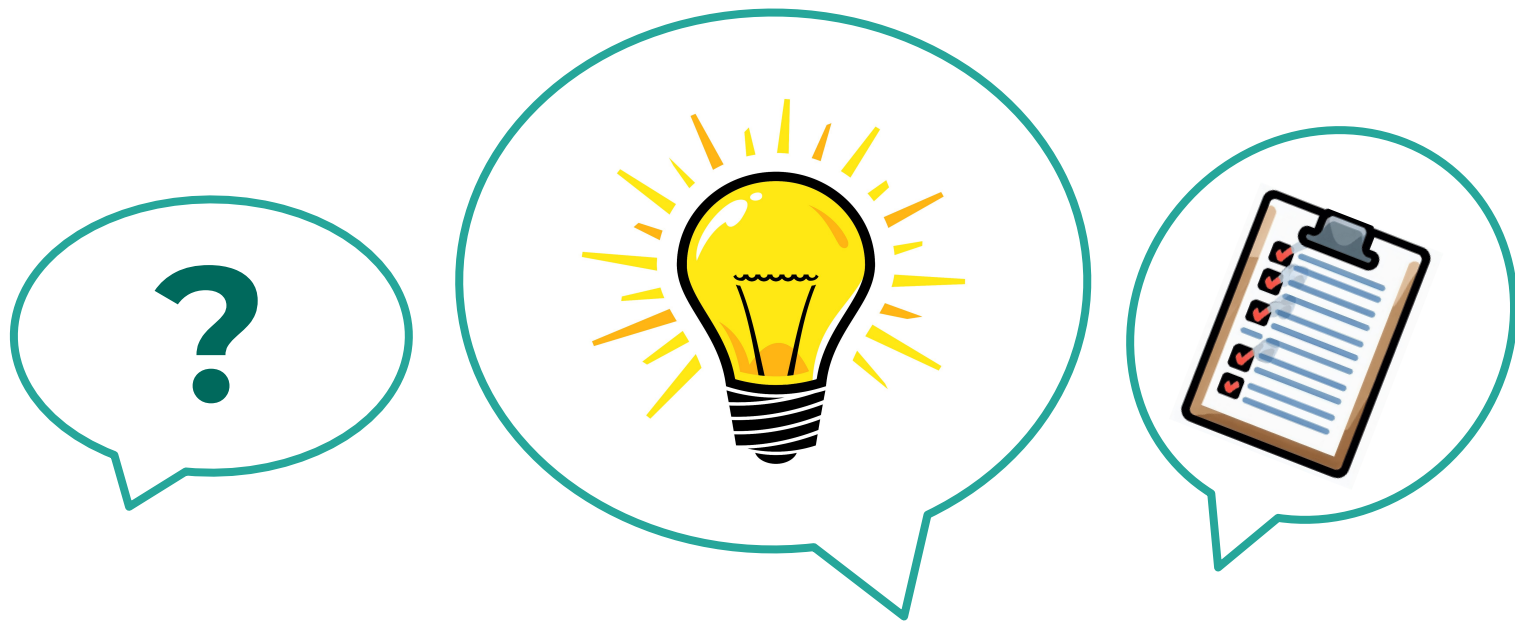
What else can VR Provide?

- Training, Consultation, and Technical Assistance
- Local/Statewide Resources - MRS/BSBP provides specific support for businesses such as talent acquisition, retention, incumbent worker support, and other trainings.
- Disability Awareness Training



Planning, Communication and Media Releases

VR and Public Agencies will collaborate to promote planning for Pre-ETS, individual VR services, communication of services and activities available statewide.



Referral Process

The Agencies agree to promote the delivery of Pre-ETS and individual VR services through joint efforts to develop and coordinate local referral procedures.

VR accepts referrals of SWDs in need of Pre-ETS or individual VR services during the transition planning process.

VR Will:

- Identify local contact(s) for referrals.
- Make available referral forms and information on Pre-ETS and individual VR transition services.
- Encourage coordination.
- Process referrals according to VR policies and procedures.

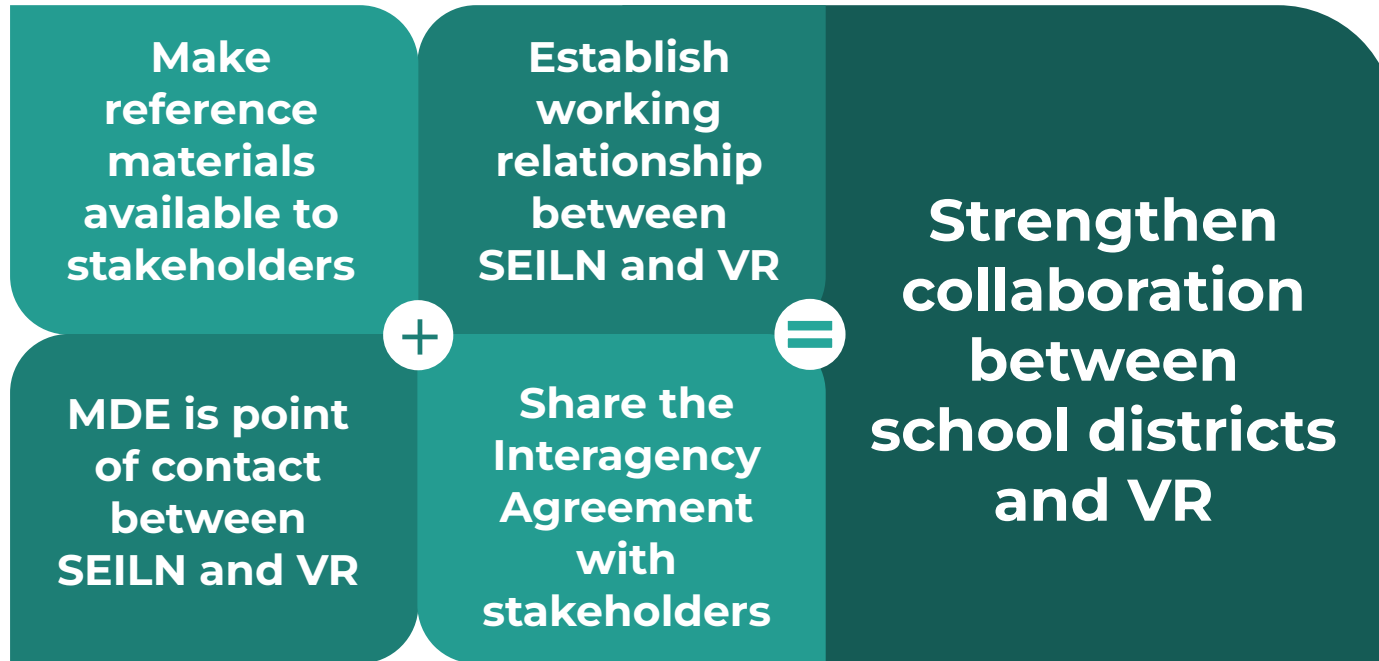
Who is Eligible?

A **potentially eligible student** is a student who meets criteria as a SWD and who can benefit from participating in Pre-ETS required activities, but has not applied, or been determined eligible for VR services.

OR

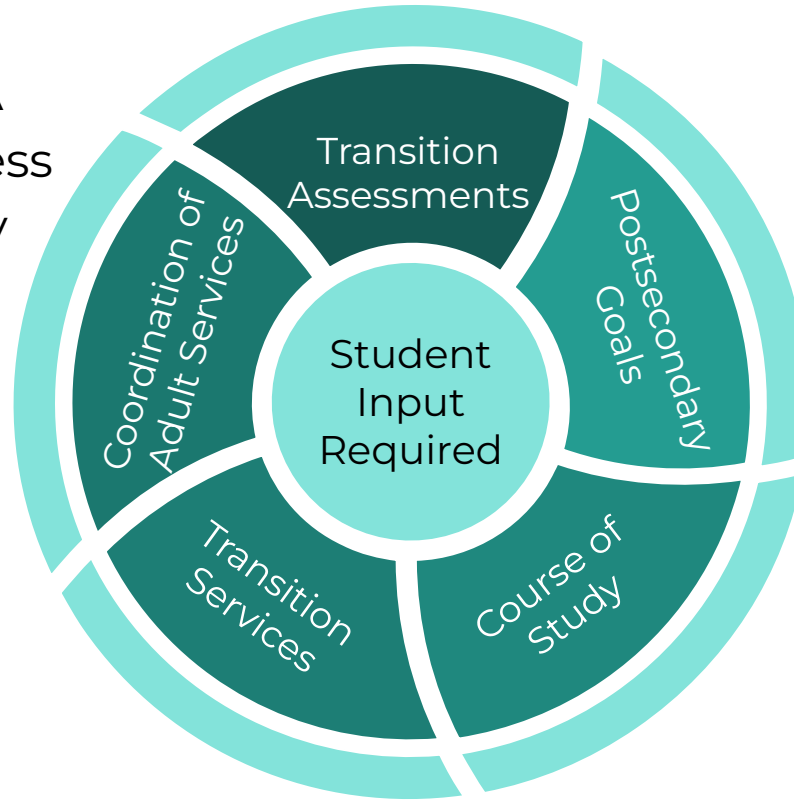
An **eligible student** is a student who meets the criteria as a SWD and has applied and been determined eligible for individual VR services.

Role of Michigan Department of Education (MDE)



IEP Transition Planning Summary

- Required by IDEA
- Continuous process
- Updated annually



Team includes:

- Student
- Family
- School team
- Other agencies (such as VR)
- Anyone invited by the student

Interagency Agreement: Coordination

Vocational Rehabilitation:

Michigan Department of Education - Office of Special Education:

Will team up with other agencies to identify the 5 Pre-ETS activities and enhance student opportunities



Will be point of contact for Special Education Instructional Leadership Network (SEILN) and VR to minimize duplication and maximize resources

Will work with other agencies to identify students eligible for Pre-ETS or VR



Will help with student documentation between agencies for provision of Pre-ETS

Will attend IEP meetings with consent and advance notice



Will advise public agencies to invite VR to IEP meetings with consent and advance notice

Comparable Benefits

Services and benefits provided or paid for, in whole or in part, by other agencies, by health insurance, or by employee benefits must be explored.

Public agencies have the responsibility to access comparable benefits when providing transition services to eligible customers as long as services are not duplicated and used as stated under the providing agencies regulations. So long as:

1. The service(s) concurrently provided by a provider network are intended to supplement/complement service(s) provided by VR.
2. There is no duplication of payment for the same service element(s).
3. There is no duplication of payment for the delivery of face-to-face services provided to an individual during a specific period (e.g. the same 15-minute unit of time).

A provider network may provide transition services prior to the completion of assessments and eligibility determination by VR. VR may provide vocational rehabilitation services prior to the completion of eligibility for services from a provider network.

Subminimum Wage

VR will:

1. Limit placement of eligible individuals into subminimum wage employment to ensure individuals with disabilities have opportunities and access to information and services assisting with achieving Competitive Integrated Employment (CIE).
2. Adhere to United States Department of Labor (USDOL) procedures. VR will document existing section 14(c) holders through bi-annual reports available through USDOL.
3. Continue to use the existing process identified in the roles and responsibilities to document the completion of actions required for youth under this agreement.
4. Ensure the public agencies do not enter a contract or other arrangement with a section 14(c) certificate holder for the purpose of operating a program for an individual who is under age 24 which is compensated at a subminimum wage. On an annual basis, all parties should confirm no such agreements are in place or established.

LEA Responsibilities With Regard to Subminimum Wage

Documentation
of IPE
outcomes

- Student Name
- Description of service/activity
- Provider of service/activity
- Date of service/activity
- Signature of LEA personnel
- Date of signature
- Date/method of submission to VR

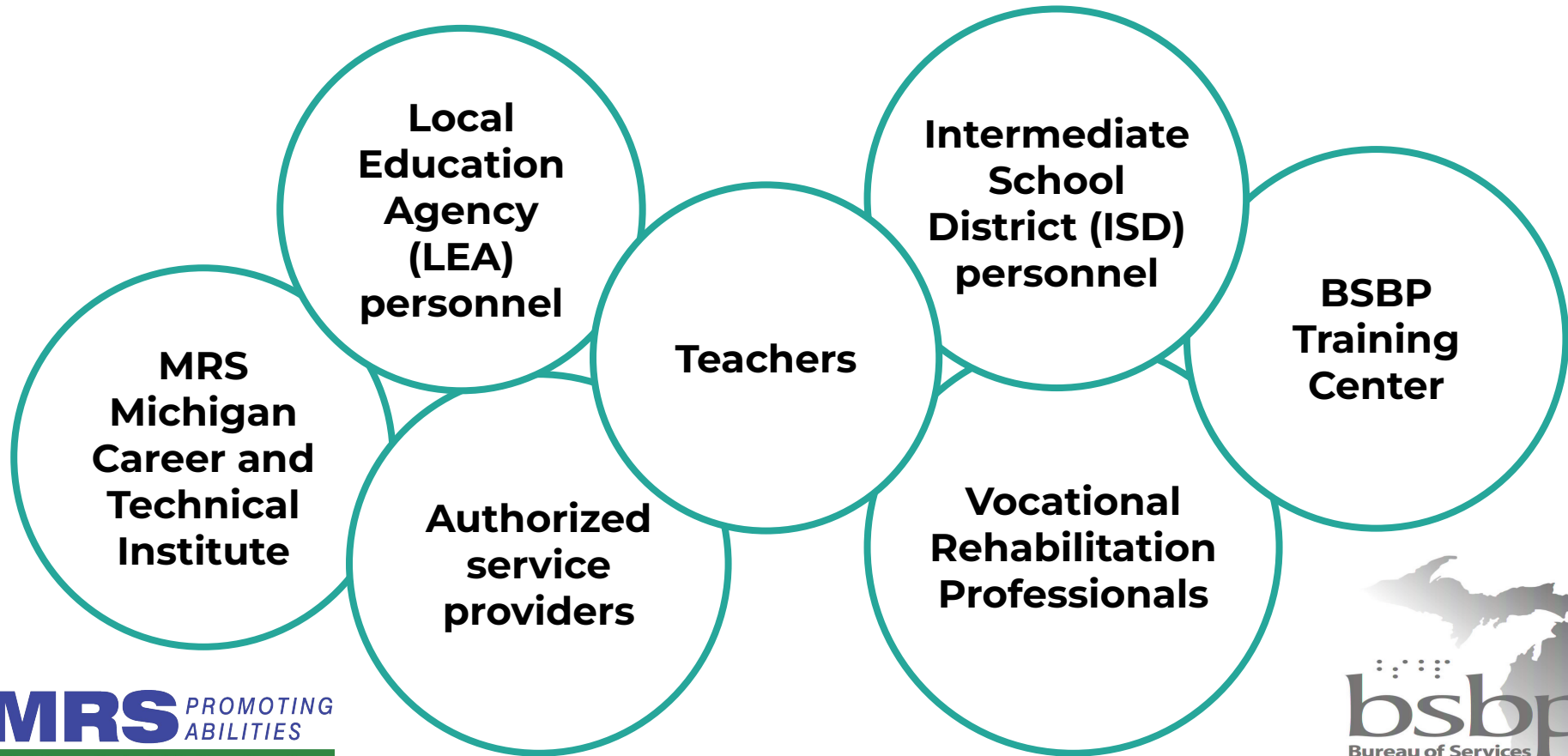
Documentation
in case of
youth's refusal
of service

Final Requirements of Agreement:

- Non-disclosure of confidential information
- Dispute resolution between agencies
- Entire agreement

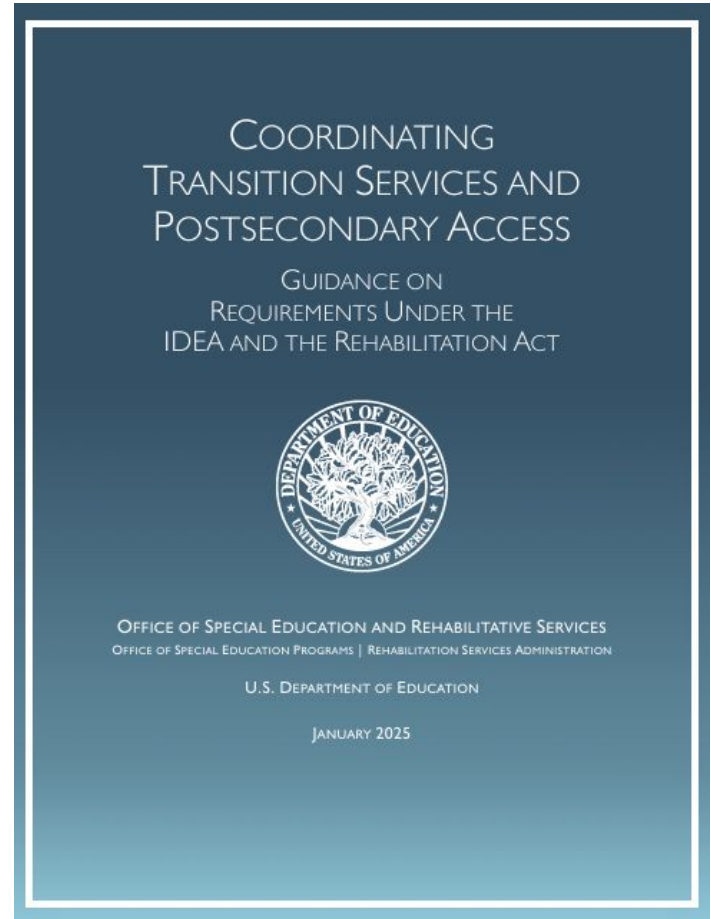


Where To Get Information



Alignment with Federal Guidance

- Defines LEA responsibilities
- Transition services: definitions and examples
- Use of IDEA and VR funds for transition services
- Establishes coordination of VR and IEP transition planning
- Provides guidelines for VR in the area of transition services



MITT: Strategic Planning Timeline

October 2024	<ul style="list-style-type: none">● Interagency Agreement signed● Strategic plan created
November 2024 through June 2025	<ul style="list-style-type: none">● Development of training for professionals● Present at regional conferences
May 2025	<ul style="list-style-type: none">● Further development of Strategic Plan at Capacity-Building Institute (National Technical Assistance Center on Transition)
July through October 2025	<ul style="list-style-type: none">● Disseminate training tools to statewide contacts

Online Resources

- BSBP: [What are Pre-ETS](#)
- BSBP: [Transition to Adulthood: A Timeline for Parents](#)
- MRS: [Two Levels of Support](#)
- MRS: [Pre-Employment Transition Services](#)
- MRS: [Michigan Career and Technical Institute](#) Video
- MRS: [Michigan Rehabilitation Services for Young Adults](#) Video
- MDE-OSE: [Transition Planning: Considerations for Students With Disabilities and Families](#) ([Spanish](#), [Arabic](#))
- Michigan Alliance for Families: [A Guide to Transition: From Special Education to Adulthood](#)
- MSU STRIDE Center: [Resource Locator](#)

Questions?

Reach out to any of our MITT agencies.



Contact Information:

Michigan Department of Education:

Nichole E. Moore Ed.S., Technical Assistance Coordinator

Email: mooren9@michigan.gov

Michigan State University STRIDE Center: <https://stride.msu.edu>

Eric Roberts, Ph.D.

Email: robe1330@msu.edu

Michigan Rehabilitation Services: [LEO - Michigan Rehabilitation Services](#)

Jennifer Hirst, Vocational Rehabilitation Transition Consultant

Email: hirstj@michigan.gov

Bureau of Services for Blind Persons: [LEO - Bureau of Services for Blind Persons](#)

Rebecca Flatt, Statewide Rehabilitation Transition Consultant

Email: flattr1@michigan.gov

Michigan Alliance for Families: [Home - Michigan Alliance for Families](#)

Karen Wang, Statewide Transition Specialist

Email: karen@michiganallianceforfamilies.org