

# Integrated Speech and Occupational Therapy for Vocational Success

Enhancing Vocational Outcomes Through Collaborative Therapy

Hannah Tarnaski & Taylor Picano



# About Us



Taylor Picano, M.A. CCC-SLP

Hannah Tarnaski, OTRL





Kahoot!

# Presentation Overview

## Introduction to Integrated Therapy



An overview of integrated therapy and its significance.

## Key Components for Vocational Success



Discussion on the essential elements that contribute to success in vocational settings.

## Collaborative Techniques in Practice



Exploration of techniques that foster collaboration among professionals.

## Case Studies & Real-World Applications



Presentation of case studies that illustrate practical applications of the discussed concepts.

## Q & A



Open floor for questions and answers to clarify any aspects of the presentation.

# Learning Objective 1

Key Components of Integrated Speech and OT



## Objective

Identify key components of integrated Speech and OT for vocational outcomes.



## Foundational Skills

Understanding the foundational skills needed in work environments



## Job Performance Benefits

Exploring the benefits for job performance and satisfaction



# Learning Objective 2

Implementing Collaborative Strategies for  
Workplace Skills



## Objective

Implement collaborative strategies to support workplace skills.



## Role-playing for communication

Utilize role-playing techniques to enhance communication skills among team members.



## Task-specific motor training

Engage in task-specific motor training to improve practical skills required for workplace tasks.



## Environmental modifications

Make environmental modifications to create a more supportive workplace setting.



## Routine Planning

Implement routine planning to streamline workflows and enhance productivity.

# Learning Objective 3

Evaluating Interdisciplinary Case Studies in  
Vocational Rehab



## Objective

Evaluate interdisciplinary case studies in vocational rehab.



## Case Study Insights

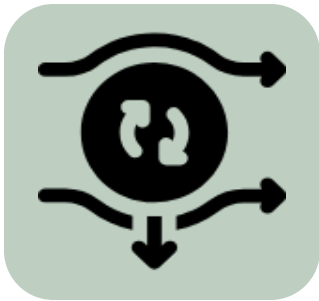
Observing progress through OT and SLP collaboration.



## Metrics for Success

Metrics for job readiness and retention success.

# Importance of Integrated Therapy in Vocational Success



## **Enhances both communication and functional skills**

The integration of speech and occupational therapy significantly improves an individual's ability to communicate effectively while also developing essential functional skills.



## **Provides holistic support for job readiness and retention**

By combining therapies, individuals receive comprehensive support that prepares them for employment and helps maintain their positions.

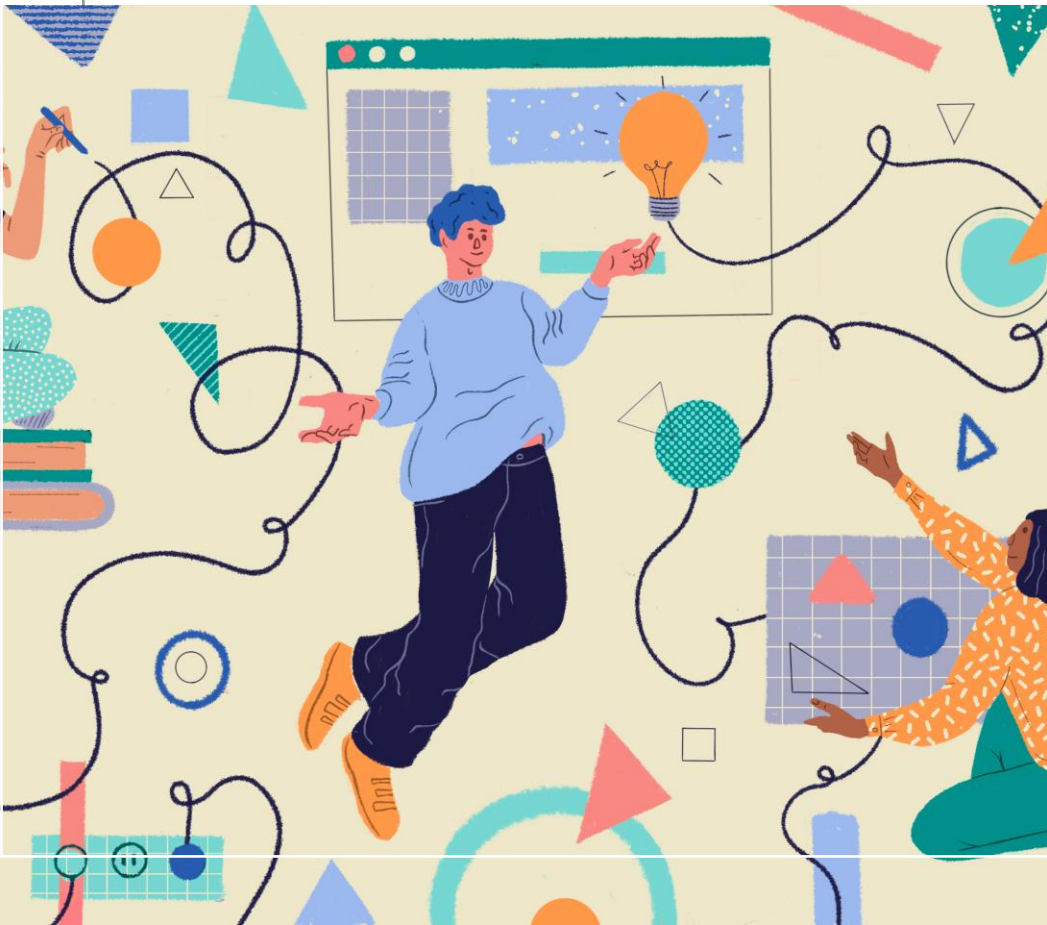


## **Reduces workplace barriers for individuals with disabilities**

Integrated therapy approaches help identify and mitigate challenges that individuals with disabilities may face in the workplace.



# Key Components of Integrated SLP & OT Approach



01

## Communication Skills Development

Focuses on enhancing speech clarity, expressive skills, and comprehension.

02

## Motor and Cognitive Skill Enhancement

Emphasizes fine motor skills, executive functioning, and sensory regulation.

# Case Study 1: Job Preparation with Integrated Therapy

## Focus



Developing communication and motor skills for an assembly-line role.

## Therapy approach: Task-specific motor exercises



Incorporating exercises that are specifically designed to improve motor skills relevant to assembly-line tasks.

## Therapy approach: Practicing verbal instructions and reporting



Engaging in activities that enhance verbal communication and the ability to report on tasks effectively.

# Case Study 2: Enhancing Workplace Social Skills

Increasing Comfort and Confidence in Social Interactions

## Therapy Approach

Utilizing role-playing social scenarios and practicing nonverbal communication cues.



## Focus

Increasing comfort and confidence in social interactions at work.

# Best Practices in Speech and OT for Vocational Success

Interdisciplinary  
Collaboration

Task Specific Skill  
Building

Focus on  
Communication  
Competencies

Sensory and  
Emotional  
Regulation  
Techniques

Use of Executive  
Functioning  
Supports

Ongoing  
Assessment and  
Adaptation

Foster Self-  
Advocacy Skills

Physical  
Adaptations and  
Accessibility  
Solutions

# Preparing for Employment and Skill Retention



CHECK-INS AND PROGRESS  
TRACKING



SKILL ENHANCEMENT FOR TASK  
EFFICIENCY AND QUALITY



TOOLS FOR SELF-REGULATION  
AND COPING WITH JOB  
DEMANDS

# Enhancing Employer Relations



Promoting inclusion and reducing misunderstandings



Strengthening relationships with supervisors and peers



Supporting Conflict Resolution and adaptability



Increased workplace inclusion and diversity awareness

# Closing Thoughts & Questions

Email

[hannaht@wskills.com](mailto:hannaht@wskills.com), [taylorp@wskills.com](mailto:taylorp@wskills.com)

WSC Clinical Services

Organization

Work Skills Corporation

