

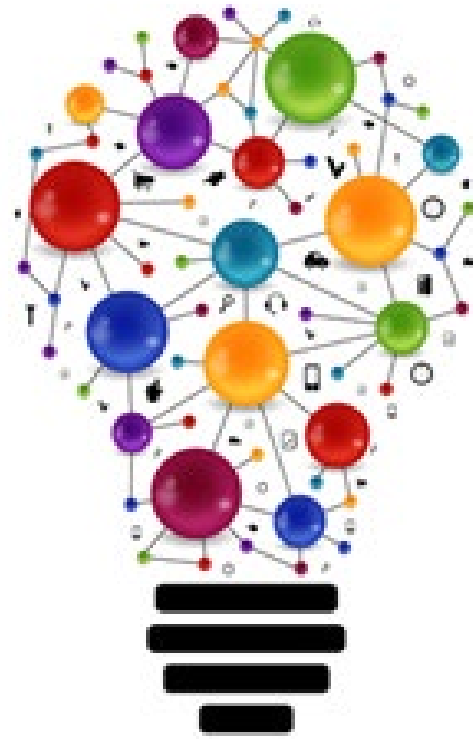


# Michigan Rehabilitation Services

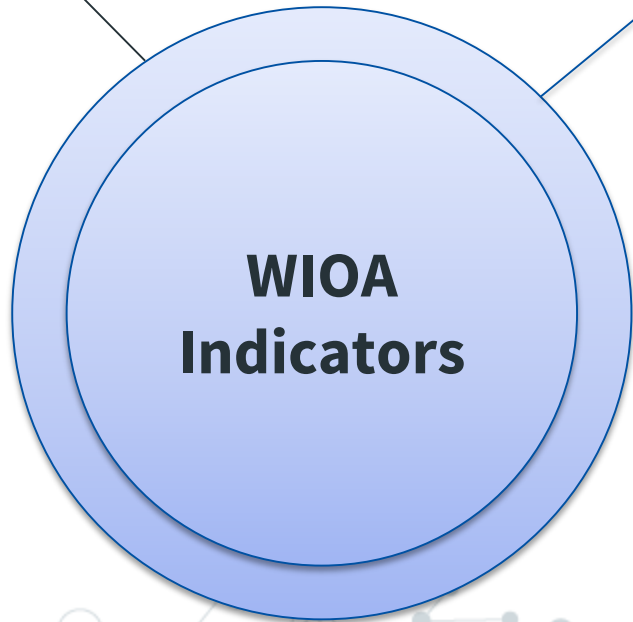
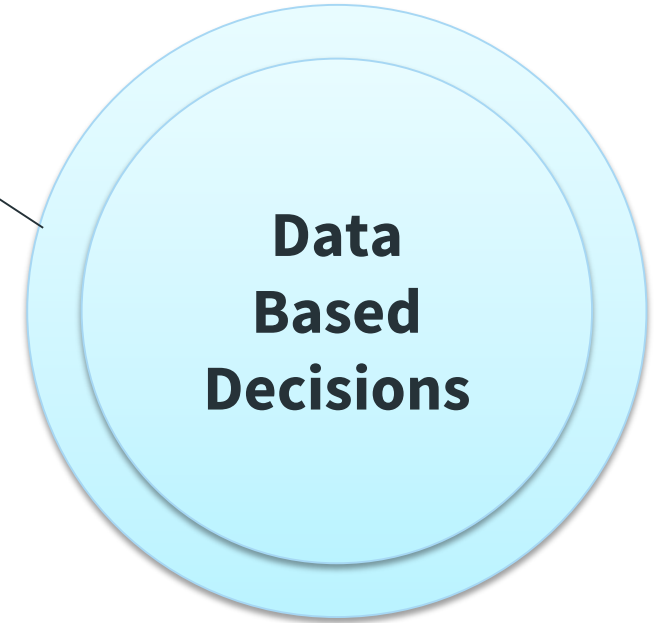
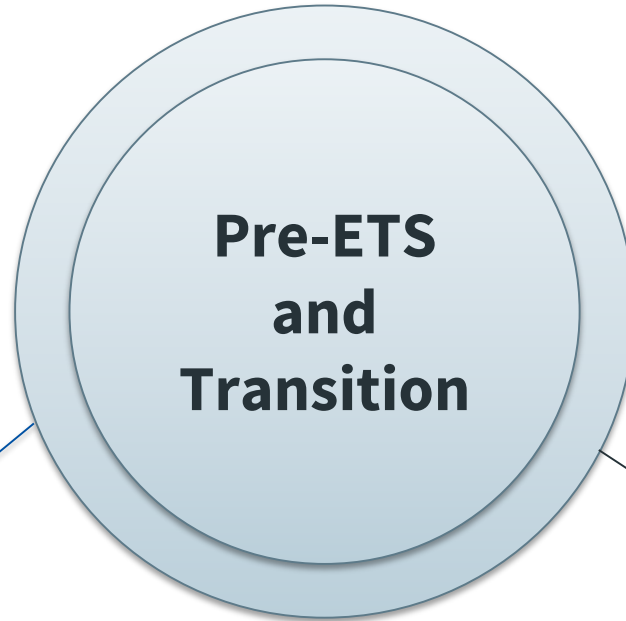
Department of Labor  
and  
Economic Opportunity

***Innovation and Special Programs Unit***

# Innovation Unit



# Innovation Unit Priorities





# Innovation Proposals

## *MRS Strategic Focus Areas*

- Provide Seamless Services to MRS Customers and Businesses
- Provision and Expansion of Pre-Employment Transition Services
- Consistent Achievement of Competitive Integrated Employment Outcomes
- Collaboration and Alignment with Internal and External Strategic Partners



# Innovation Proposals

## *Process*

- ◎ *Submit & Review*
  - Innovation Team considers proposal and scores according to agency Mission & Values as well as strategic focus areas
- ◎ *Consult*
  - Assigned a consultant to work with proposal contacts to develop proposal and present for Executive Team approval
- ◎ *Plan, Implement, & Evaluate*
  - Establish fund source, data collection, and outcome evaluation while providing technical assistance quarterly



# Highlights

## 8 approved project sites:

- **Oakland**- Small business exploration for students with disabilities
- **Ann Arbor (Jackson)**- Work based learning and support group program for non-college bound students and graduated youth with disabilities
- **Mid-Michigan (Mt. Pleasant)**- Post-secondary counseling and peer mentoring program focused on college adjustment



# Highlights

- **Western Wayne-** Student and family outreach program for the Arabic-Chaldean community and other minority groups
- **Macomb-** Reverse Job Fair
- **Marquette-** Focused skills training for returning citizens
- **Mid-Michigan (Saginaw)-** Post-secondary counseling and peer mentoring program focused on college adjustment focused on students with Autism
- **Southwest (Kalamazoo)-** Specialized work-based training for students with disabilities (deferred)



# Marquette: Offender Success

- The Offender Success program was developed to provide specialized training for returning citizens that meets employer demands for a skilled manufacturing workforce in Michigan's Upper Peninsula

## **Objectives:**

- Provide specialized training to returning citizens leading to competitive integrated employment.
- Provide skilled labor pool to meet local business demands
- Align partners to serve manufacturing businesses in Central Upper Peninsula





# Marquette: Offender Success

## Strategy:

- Rapid response & partnerships for in demand occupations
- Engage early
- Leverage partnership services: support & training

New Training FY20: Welding Certification

# Marquette: Offender Success



## Who Participated?

### **Partners:**

- Bay College
- Great Lakes Recovery Centers
- Michigan Works!
- Midwest Trucking

### **Customers:**

- Returning citizens
- Low transferrable skill and qualifications

# Marquette: Offender Success FY19



Position	Employer	Hourly Wage	Hours Week	Closure Date
Truck Driver	KRS Transport 1	\$15.00	40	10/12/18
Welder	Escanaba & LS Railroad	\$12.43	40	12/6/2018
Machine Operator	Superior Extrusion, Inc.	\$11.25	40	03/20/2018
Truck Driver	A&L Iron & Metal	\$14.00	40	06/01/2018
Retail Sales	Dollar Tree, Marquette	\$9.25	40	06/27/2018
Foundry Worker	Superior Extrusion, Gwinn	\$10.10	40	07/25/2018
Casting Machine Operator	American Axle and Manufacturing	\$14.00	40	08/02/2018
Auto Technician	TKL Repair	\$11.00	40	07/10/2019
Truck Driver	Zellar Sanitation	\$12.50	40	07/16/2019
Welder	Marinette Marine	\$17.00	40	9/9/19

# Marquette: Offender Success

*Current Status/Outcomes FY19*

11 Offender  
Success  
Participants  
Served

- 7 completed  
training:
- 5 Basic  
Manufacturing  
Skills Training
  - 2 Commercial  
Driving License  
Training

10 employed  
40 Hours/Week  
Wages:  
\$9.25 to \$17/Hour  
New Partnerships:  
GLRC  
MI Works!  
Bay College  
Midwest Trucking



# Macomb: Reverse Job Fair

## *Program Focus*

The reverse job fair was a collaboration between the Macomb District Office, the Business Network Division, Disability Network of Michigan, Michigan Works!, MISD and local businesses.

### **Objectives:**

- Promote the dual customer concept
- Connect business and job seeking customers
- Increase business disability awareness

# Macomb: Reverse Job Fair



## Elements of a reverse job fair:

Job seekers set up booths and have resumes, accomplishments and recommendations available.

The employer representatives walk around and visit the job seeker and their booths.

The spotlight is on the candidate.

# Macomb: Reverse Job Fair



## Who Participated?

### **Industries:**

- Retail
- Culinary
- Information Technology
- Banking/Finance
- Health Care
- Manufacturing

### **Customers:**

- Difficulty with traditional job placement
- varying skill sets and qualifications

# Macomb: Reverse Job Fair

*Current Status/Outcomes*

9  
businesses  
participated

34  
MRS  
customers  
participated

9  
customers in  
active  
negotiations  
with  
employers





## Next Steps:

### **Renewals:**

Marquette- Offender Training

Mid-Michigan-(Mt. Pleasant)-Post Secondary Adjustment

Mid-Michigan (Saginaw)-Post Secondary Adjustment

Oakland- Youth Self Employment

Western Wayne-Minority Student and Family Outreach

### **New:**

District Programs focusing on Measurable Skills Gain and Credential Attainment



# Questions





# Thank You

## Contact info:

Claudia Pettit  
MRS Rehabilitation Consultant  
Innovation Unit  
517-582-3024

Roy Del Valle  
MRS District Manager  
Marquette District Office  
906-226-6578

Vicki Wright  
MRS Site Manager  
Macomb Office  
586-412-1510

Maureen Webster  
MRS  
Rehabilitation Consultant Manager  
Innovation Unit  
517-243-0210